

FOMEI
ART

Jazz Art 310



© photo: Marion Tisserand

Jazz Art 310

true rag satin paper 310 g/m²

B&W
friendly

ART
CERTIFIED MEDIUM



ICC profily a návody: www.fomei.com/profily
/ ICC profiles & guides: www.fomei.com/profiles

Řady inkoustových tiskáren kompatibilní s FOMEI PAPER
/ Inkjet printer series compatible with **FOMEI PAPER**:

Hobby tiskárny / Hobby printers:

Canon PIXMA G, MG, MX, iX, iP, TS

EPSON EcoTank L, Stylus Photo, XP

HP Smart Tank

Profesionální tiskárny / Professional printers:

Canon PIXMA PRO, iPF, iPF PRO

EPSON Stylus PRO (SP), SureColor P (SC-P)

HP DesignJet Z



Potvrzena dlouhodobá obrazová stálost. Vhodné pro archivaci, galerijní tisky a limitované edice.

/ Confirmed long-term image stability. Suitable for archiving, gallery prints and limited editions.



Doporučeno pro černobílé reprodukce.

/ Recommended for black and white reproductions.

Jazz Art 310 je FineArt papír z bavlny, s přitažlivou saténovou emulzí a středním žilkováním. Je nekyselý a bez optických zjasňovačů. Určení: fotografie luxusních produktů, koncertní, divadelní a portrétní fotografie / Jazz Art 310 is a cotton FineArt paper with an attractive satin emulsion and medium veining. It is ACID and OBA free. Usage: photography of luxury products, concert, theater and portrait photography

parametr / parameter	hodnota / value	standard / norm
gramáž / grammage	310 g/m ²	ISO 536
tloušťka / thickness	430 μm	ISO 534
odstín (CIE-L*a*b*) / tint (CIE-L*a*b*)	98.7, 0.2, 1.3	CIE, D50/2°, M0
lesk 60° / gloss 60°	15 %	ISO 2813
jádro role / roll core	3" (76,2 mm)	softpress core

Manipulace s papírem

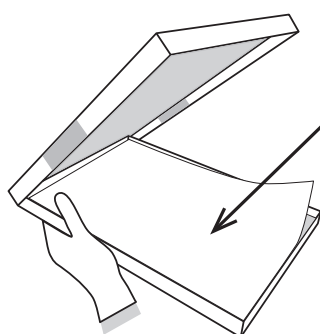
/ Paper handling



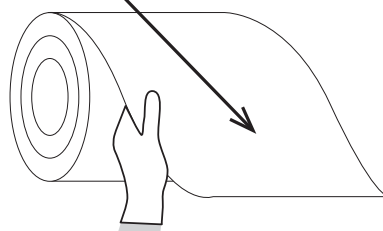
18-25 °C



40-60 %



tisková strana / printing side



rukavice
/ gloves

FOMEI



FOMEI ART

FineArt media for desktop and large format Canon, EPSON, HP printers



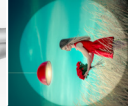
Jazz Art 310
true rag satin paper 310 g/m²



Baryta SILK 310
true baryta paper lustre 310 g/m²



Baryta MONO 290
true baryta paper satin 290 g/m²



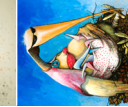
Cotton Smooth Bright 320
smooth bright white FineArt paper 320 g/m²



Cotton Smooth 320
smooth FineArt paper 320 g/m²



Cotton Textured 320
textured FineArt paper 320 g/m²



Cotton Smooth 240
smooth artistic paper 240 g/m²



Cotton Textured 240
textured artistic paper 240 g/m²



Aquarella Art Matt 210
artistic α-cellulose paper 210 g/m²



Art Matt Warmtone 230
artistic matte paper, warmtone 230 g/m²

		available sheets - format [cm]										available rolls - width [cm]						
		10x15	13x18	A4	30x40	A3	A3+*	A2	A2+*	30.5	43.2	61.0	91.4	106.7	111.8	127.0	152.4	
Jazz Art 310 true rag satin paper 310 g/m ²		●	●	●	●	●	●	●	●	●	●	●	●	●	●	●	●	
Baryta SILK 310 true baryta paper lustre 310 g/m ²		●	●	●	●	●	●	●	●	●	●	●	●	●	●	●	●	
Baryta MONO 290 true baryta paper satin 290 g/m ²		●	●	●	●	●	●	●	●	●	●	●	●	●	●	●	●	
Cotton Smooth Bright 320 smooth bright white FineArt paper 320 g/m ²				●		●		●		●		●		●		●		
Cotton Smooth 320 smooth FineArt paper 320 g/m ²				●		●		●		●		●		●		●		
Cotton Textured 320 textured FineArt paper 320 g/m ²				●		●		●		●		●		●		●		
Cotton Smooth 240 smooth artistic paper 240 g/m ²				●		●		●		●		●		●		●		
Cotton Textured 240 textured artistic paper 240 g/m ²				●		●		●		●		●		●		●		
Aquarella Art Matt 210 artistic α-cellulose paper 210 g/m ²				●		●		●		●		●		●		●		
Art Matt Warmtone 230 artistic matte paper, warmtone 230 g/m ²				●		●		●		●		●		●		●		